

Installation Instructions

**Up
-N-
OVER™**



Patent Pending



Special Notes :

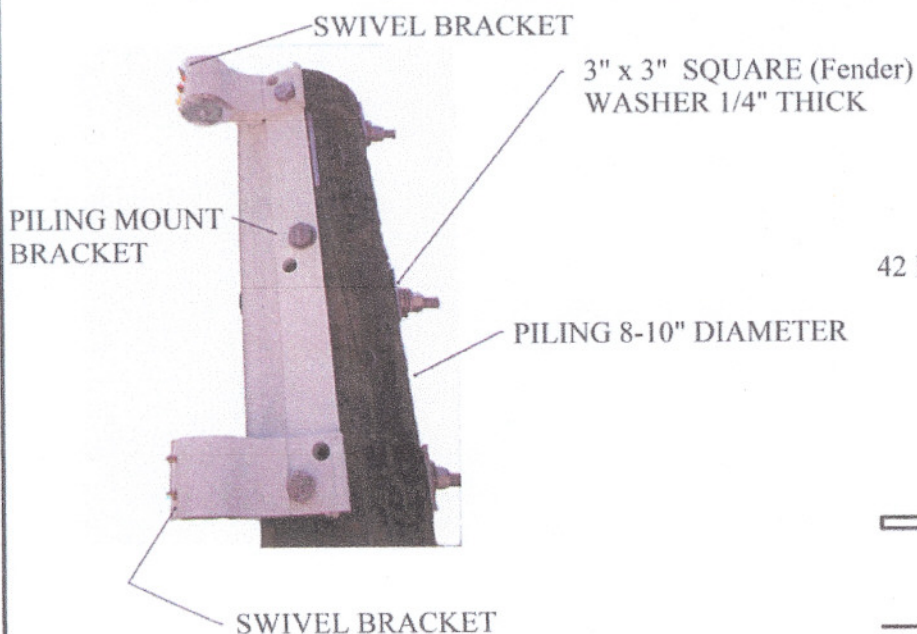
Improper assembly or overloading this lift beyond the rated capacity will void the warranty.

Any electrical connection must be grounded with a GFCI.

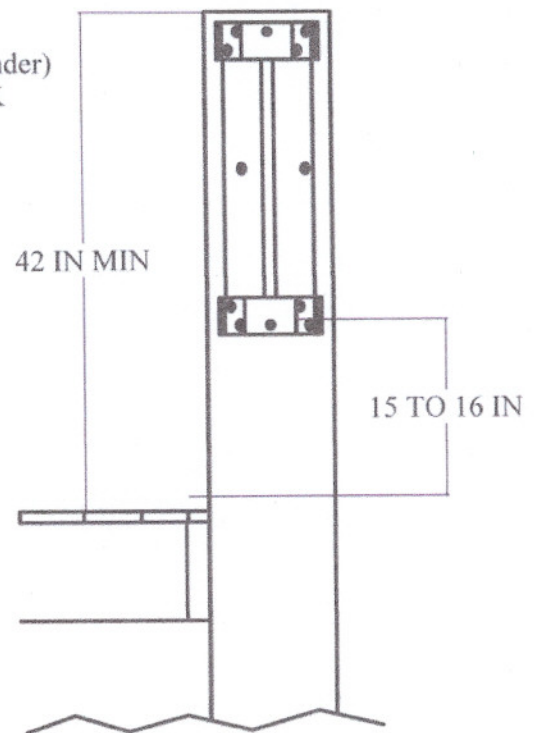
AM1611 SHEET 1
Date: 7/11/2009

STEP 1: UP-N-OVER PILING MOUNT INSTRUCTIONS

1. The first step in installing your lift is to install the piling mount. You will need a $\frac{3}{4}$ " drill bit, 6 bolts (Must $\frac{3}{4}$ " diameter and 3" longer than the piling's diameter) with wrenches to fit the $\frac{3}{4}$ " bolts and a hammer or rubber mallet to drive the bolts through the piling. Piling must be 8-10 inches in diameter. Note: $\frac{3}{4}$ inch bolts not supplied.
2. The 8" to 10" piling must be permanently secured before installing this unit. Piling height must be a minimum of 42" above the dock surface or unit will not clear deck when rotating.
3. Assemble the (2) swivel brackets to piling mount bracket by matching the "AA" and "BB" markings. (VERY IMPORTANT)
4. Level the bracket and mark the 6 holes for the $\frac{3}{4}$ inch bolts. Stager the holes to allow the bolts to pass each other when installed though the piling. The bottom of the lower swivel bracket must be 15 to 16 inches above the top of the deck.
5. Remove the (2) swivel brackets and the piling mount bracket. Drill (6) holes using the $\frac{3}{4}$ " drill bit.
6. Mount the (2) swivel brackets and the piling mount bracket using the $\frac{3}{4}$ " bolts. Remember, the bolts will have to be driven through the piling with a rubber hammer.
7. Install washers and nuts on the back side of the piling and tighten as tight as possible. Note: Be sure to use large fender washer for the backside of the piling for each bolt. Tighten the bolts periodically to compensate for the piling shrinkage.



PILING MOUNT INSTALLED



PILING MOUNT DIAGRAM
(MUST BE LEVEL !!)

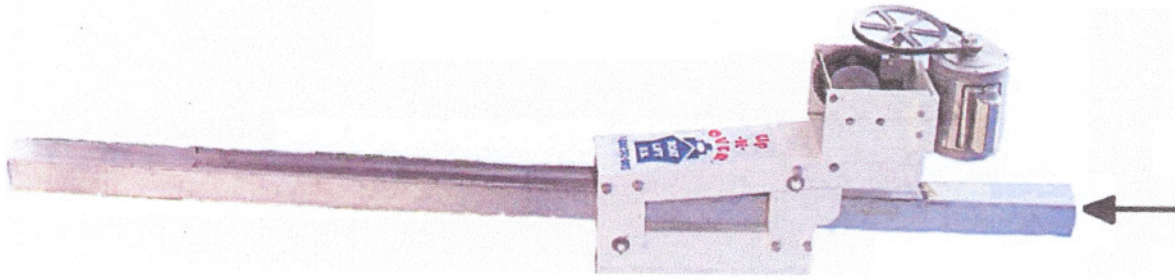
Special Notes :

Improper assembly or overloading this lift beyond the rated capacity will void the warranty.

Any electrical connection must be grounded with a GFCI.

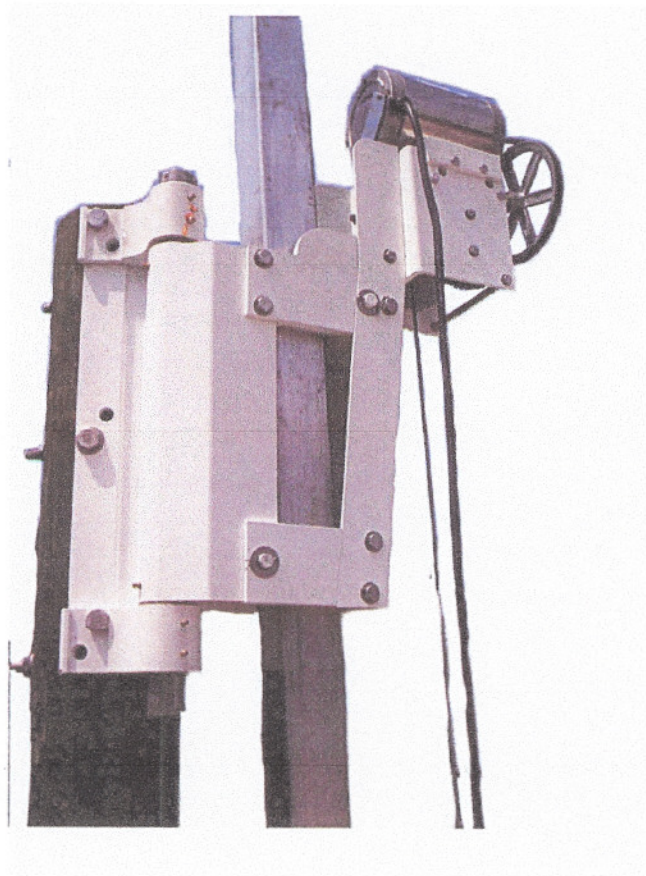
STEP 2 : UP-N-OVER MAST INSTALLATION

1. Insert the mast into the top of the head assembly as shown in the picture.



STEP 3 : UP-N-OVER HEAD ASSEMBLY TO PILING MOUNT

1. Secure the pivot head assembly to the pile mount using supplied pin.



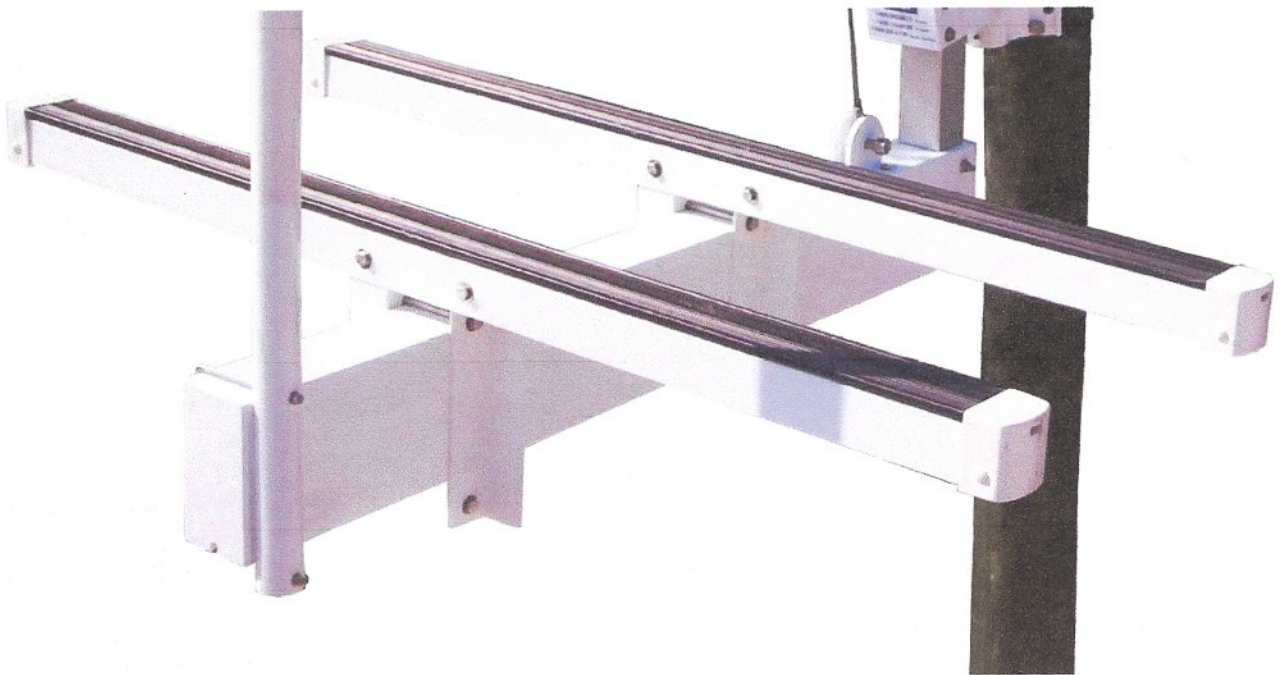
Special Notes :

Improper assembly or overloading this lift beyond the rated capacity will void the warranty.

Any electrical connection must be grounded with a GFCI.

STEP 4 : UP-N-OVER CRADLE RECEIVER INSTALLATION

1. Carefully rotate the head assembly with mast over to dock side.
2. Insert mast into cradle receiver and insert the (3) supplied stainless bolts (6" long) through cradle receiver and mast.
3. Attach the aluminum bunks with brackets onto the cradle beam using the supplied stainless fasteners. (see front photo)
4. Install the stainless cable using the supplied shackle.
5. Tighten all bolts and lubricate all grease fittings. Lubricate all grease fittings regularly.



Special Notes :
Improper assembly or overloading this lift beyond the rated capacity will void the warranty.
Any electrical connection must be grounded with a GFCI.

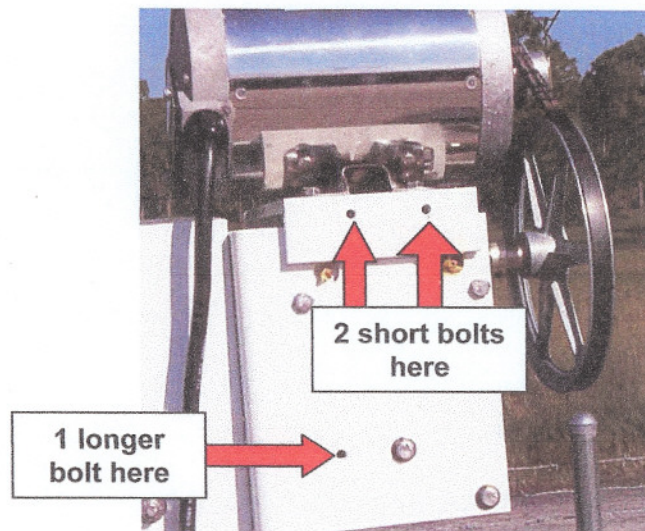
AM1611 SHEET 4
Date: 7/11/2009



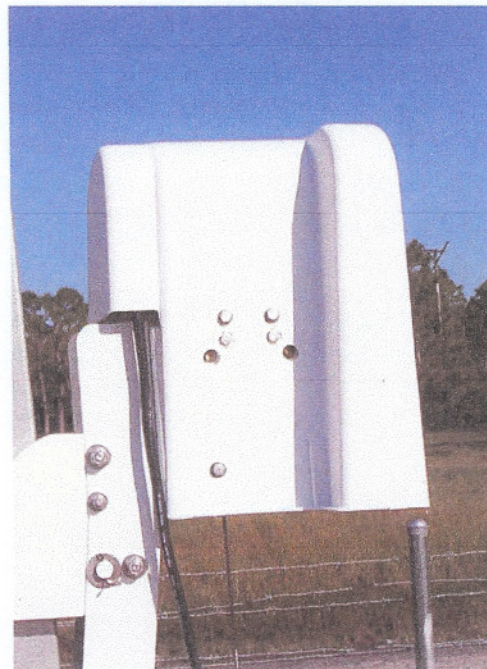
Attention Installers

- The Up-N-Over PWC Lift **MUST** be installed using (6) $\frac{3}{4}$ " diameter bolts.
- Full voltage **MUST** be supplied to motors; have this verified by certified electrician before use. (115 volt or 230 volt is minimum)
- The piling-mount **MUST** be mounted level to the horizon !
- Instruct lift operators to remove locking-pin **BEFORE** rotating the pwc !
- Lubricate all grease zerks thoroughly **BEFORE** use.

Hoist Cover Installation



Three (3) stainless bolts are supplied to attach the cover to the Up-N-Over's hoist. Two short bolts and one longer bolt. Please note that the cover is held in place on one side only by these three bolts.



Before tightening the three (3) hoist cover mounting bolts, be sure you have the cover positioned so that the hoist's pulleys do not rub the interior of the cover.